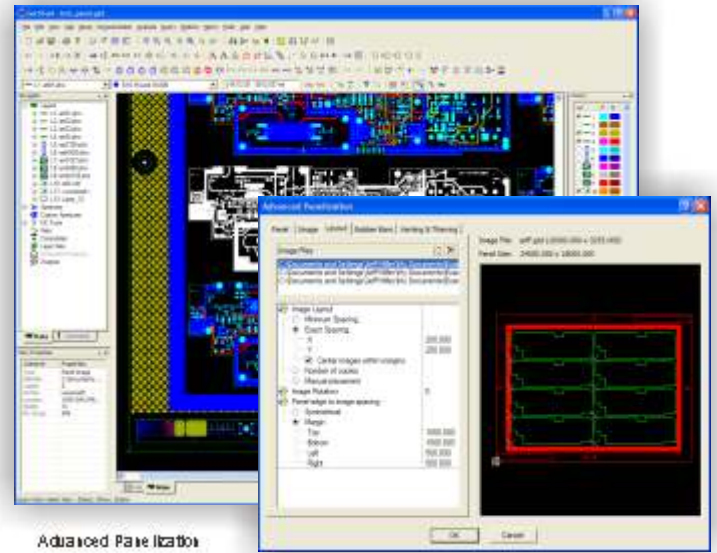


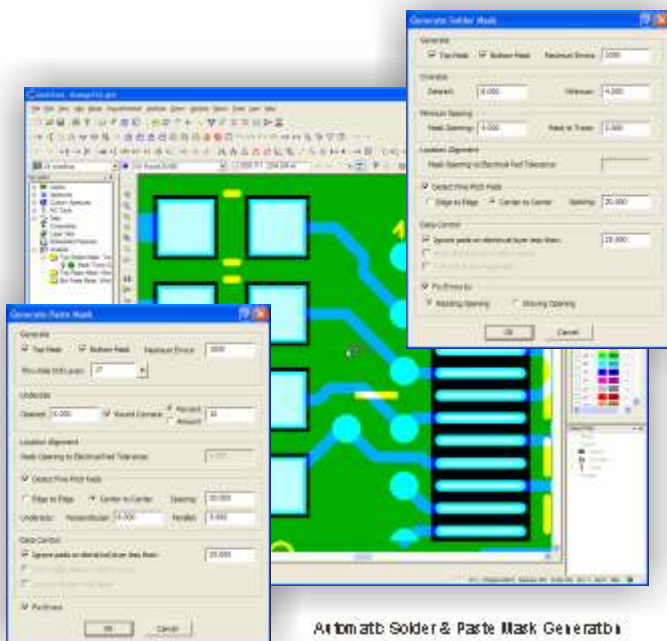
In an era of downsizing, consolidation, and outsourcing, the CAM system you choose is more important than ever. The last things you need in your design flow are revision spins, cost over-runs, and reductions in your product's time-to-market due to manufacturing issues. Purchase price is only a part of the ROI equation. Implementation costs in both time and manpower, not to mention ongoing maintenance costs, can keep ROI at arm's length indefinitely.

The solution is: *GerbTool*. Don't be fooled by the name; *GerbTool* is not just a Gerber viewer. It is a full-featured, CAM software solution, capable of handling the toughest jobs for a lot less money than the competition. Below are just a few of the features you can expect to find within *GerbTool*.



Feature Highlights:

- ✓ Import Wizard that loads ALL industry formats (Gerber, Drill, Mill, HPGL, DXF, and more...).
- ✓ Intelligent Data Transfer with ODB++, ODB++ (X), and IPC-2581 included in select bundles.
- ✓ Database Navigator provides quick and easy access to all necessary information without the need for menus or toolbars.
- ✓ IPC-D-356/A Netlist information can be displayed graphically and aligned like other layers.
- ✓ HyperNETLIST Extraction can generate netlist information for even the largest of designs in a matter of minutes.
- ✓ Dynamic DfM Analysis Suite provides 75+ checks that cover Design Information, Design Rules Checks, Manufacturing Rules Checks, Design for Fabrication, and Embedded Passives (optional). Dynamic *checklist* environment allows for *single-pass* analysis of an entire design.
- ✓ True graphical Netlist Comparison. HyperNETLIST Comparison includes Pin-Point Error feature to quickly locate your Shorts and Opens.
- ✓ Advanced Panelization (optional) makes quick work of even the toughest tooling processes. Step *multiple* designs with ease. Powerful Venting, Thieving, and Robber Bars are included.



GerbTool can provide you with fast ROI by helping to eliminate those costly revision spins, improve your time-to-market, and increase your overall design quality before your data has even left your hands. Come and take a closer look at the many features that *GerbTool* has to offer, and see how it can refine your Design and Manufacturing process flow today. Contact a sales representative and they will guide you in selecting the appropriate *GerbTool* bundle to suit your needs and budget.

For more details, and to download a trial license that can demonstrate GerbTool's effectiveness on your own data, visit the *GerbTool* Web site today at <http://www.gerbtool.com>.

© 2006 WISE Software Solutions, Inc. All rights reserved. Trademarks are the property of their respective owners.

www.wssi.com 800.786.5800

Basic Features:

Single file, 32-Bit "Intelligent" Database Structure
 High Speed Graphics
 999 Layers
 9999 Apertures
 Integrated Printing
 Polygon Support (Intelligent Raster Fill, POEX/POIN, G36/G37)
 Compositing (Pos & Neg Merging, Paint & Scratch, see also Object Polarity under Advanced Features)
 Import Wizard (Detects Gerber, Drill, Mill, HPGL, DXF, and Other Formats, Converts Aperture Tables and Reads Automatically)
 Automatic Aperture and NC Tool List Converter (Rules Based, Supports Any System)
 HPGL, HPGL/2 Import
 Gerber 274D and 274X Import
 MDA AutoPlot Import (Fire9XXX, Cymbolic Sciences)
 Barco DPF Import
 NC Data Import (Support for Excellon, Sieb & Meyer)
 DXF Import
 HPGL, HPGL/2 Export
 Gerber 274D and 274X Export
 MDA AutoPlot Export (Fire9XXX, Cymbolic Sciences)
 Barco DPF Export
 NC Data Export (Support for Excellon, Sieb & Meyer)
 DXF Export
 ODB++ Import and Export (Support for Valor and Frontline Solutions)
 OffSpring Import and Export (Support for IPC-2581)
 PostScript Export
 Bitmap Out (Windows BMP, Black and White, Color, up to 1000dpi)
 IPC-D-350 Export
 Editing Capabilities (Move, Copy, Delete, Rotate, Mirror, Trim, Join, and More)
 Adding Capabilities (Flash, Line, Arc, Circle, Rectangle, Polygon, Text, and More)
 IPC-D-356 & 356A Netlist Import and Export

Information Features:

Query Data (Objects, D-codes, Nets, Net Length, User Data)
 Measure Data (Point-to-Point, Center-to-Center, Edge-to-Edge)
 Reports (Apertures, Drill, Mill)
 Redline Notes (Document Changes, Problems, and More)
 Dimensioning (Create Fabrication Drawings, Document Board Size, and More)
 Drawing (Drill Charts, Balloon Notes, and More)

Analysis Features:

Browse Errors Directly from Navigator (Quickly Step Through Violations, Repair, and Check-off)
 Copper Area Calculation (Fast and Accurate)
 Graphical Find Duplicates (Quickly Locate and Remove Duplicate Data Objects, such as Flashes, Draws, and More)
 Graphical Layer Compare (Compare Any Two Layers Quickly and Accurately, Browse Differences Through the Navigator)
 Design Information Queries (Quickly check Min. Air Gap, Min. Trace Width, Number of Conductive Layers, Number of Drill Hits, and More)
 DRC w/AutoCorrect (Track-to-Track, Track-to-Pad, Pad-to-Pad, Min. Track, Min. Pad, Board Edge, and More)
 Graphical Netlist Comparison (Shorts, Opens, No Copper for Net, No External Net for Copper. Errors are Highlighted Using Navigator)
 Pin-Point Netlist Errors (Quickly Locates Short and Open Errors from Netlist Comparison Results and Highlights the Location)
 DfM/DfF w/AutoCorrect (Acid Traps, Resist Slivers, Copper Slivers, Starved & Isolated Thermals, Solder Mask Slivers & Bridges, Pin Holes, Registration, and More)
 Embedded Passive Analysis (Passive Alignment, Bar Overlap, Bar Extension, Bar Width, Passive-to-Copper, Passive-to-Drill, and More)

Macro Scripting Features:

Powerful Macro Developer (Drag-and-Drop Capabilities and More)
 Load, Run, and Record (Support for Start-Up, Shut-Down, and On-Load Macros)
 Support for "Nested" Macros (Embed Macros within Macros)
 Integrated Debugger (Watch Points, Stops, Step-Thru, and More)

Advanced Features:

Database Navigator (Allows Quick and Easy Access to Layers, Apertures, Netlists, and More)
 Custom Aperture Editor (Build Special Pads, Logos, and More)
 Object Level Polarity (Work with Pos & Neg Data on the Fly, Eliminate the Need for Composites)
 Layer Sets (Define Layer Sets for Blind & Buried Vias and MCM Stack-Up)
 Interactive Data Grouping (Group Objects Together for Fast and Easy Editing)
 HyperNETLIST Extraction (Supports SMT, Thru-Hole, Blind & Buried, and MCM)
 Interactive Draw-to-Flash Conversion (See Automatic Draw-to-Flash below)
 Draw-to-Custom Conversion (Convert Drawn Graphics into a Custom Aperture)
 Raster-to-Vector Conversion (Convert Raster Fill Polygons to Vector Fill for Older Plotters)
 Silkscreen Clipping (Clips Silkscreen Away From Pads)
 Composite-to-Layer (Flattens Any Composite Down to a Single Positive Layer)
 Pad Removal (Isolated or Redundant)
 Tear-Dropping (True-Shape and Snoman)
 Layer Spread (Tile All Layers to Single Sheet of Film)
 Layer Scaling
 Merge Multiple PCB Files
 Automatic Draw-to-Flash Conversion (Convert All Layers at Once, Use Mask Layer as Guide, and More)
 Basic Panelization (Step and Repeat Your Data Fast)
 Intelligent Step & Repeat Codes (Gerber and NC Data)
 Stencil Enhancement (Quickly Enhance Generic Paste Stencils with IPC-7525 Shape Definitions)
 Automatic Solder Mask Generation and Optimization
 Automatic Paste Mask Generation and Optimization
 NC-Drill Editing (Create, Add, Edit, Sort, Multiple Tool Tables, Advanced Mfg Features, and More)
 Advanced Panelization (Step Multiple .GTD Files, Full Venting/Thieving, Robber Bars, and More)
 Venting/Thieving (User-Definable Patterns: Solid, Dot, Hatch, Starburst; Integrated with Advanced Panelization)
 Panelize Multiple Data-sets (Using Advanced Panelization)
 NC-Mill Editing (Create, Add, Edit, Sort, Multiple Tool Tables, User-Defined Tabs, Advanced Mfg. Features, and More)

Advanced Interfaces:

DirectCAM Import (Support for CAM350 Through Version 8.X)
 PADS ASCII Import (Support for PowerPCB)

	GT-Viewer	GT-Communicator	GT-Inspector	GT-Designer
Single file, 32-Bit "Intelligent" Database Structure	●	●	●	●
High Speed Graphics	●	●	●	●
999 Layers	●	●	●	●
9999 Apertures	●	●	●	●
Integrated Printing	●	●	●	●
Polygon Support (Intelligent Raster Fill, POEX/POIN, G36/G37)	●	●	●	●
Compositing (Pos & Neg Merging, Paint & Scratch, see also Object Polarity under Advanced Features)	●	●	●	●
Import Wizard (Detects Gerber, Drill, Mill, HPGL, DXF, and Other Formats, Converts Aperture Tables and Reads Automatically)	●	●	●	●
Automatic Aperture and NC Tool List Converter (Rules Based, Supports Any System)	●	●	●	●
HPGL, HPGL/2 Import	●	●	●	●
Gerber 274D and 274X Import	●	●	●	●
MDA AutoPlot Import (Fire9XXX, Cymbolic Sciences)	●	●	●	●
Barco DPF Import	●	●	●	●
NC Data Import (Support for Excellon, Sieb & Meyer)	●	●	●	●
DXF Import	●	●	●	●
HPGL, HPGL/2 Export	●	●	●	●
Gerber 274D and 274X Export	●	●	●	●
MDA AutoPlot Export (Fire9XXX, Cymbolic Sciences)	●	●	●	●
Barco DPF Export	●	●	●	●
NC Data Export (Support for Excellon, Sieb & Meyer)	●	●	●	●
DXF Export	●	●	●	●
ODB++ Import and Export (Support for Valor and Frontline Solutions)	●	●	●	●
OffSpring Import and Export (Support for IPC-2581)	●	●	●	●
PostScript Export	●	●	●	●
Bitmap Out (Windows BMP, Black and White, Color, up to 1000dpi)	●	●	●	●
IPC-D-350 Export	●	●	●	●
Editing Capabilities (Move, Copy, Delete, Rotate, Mirror, Trim, Join, and More)	●	●	●	●
Adding Capabilities (Flash, Line, Arc, Circle, Rectangle, Polygon, Text, and More)	●	●	●	●
IPC-D-356 & 356A Netlist Import and Export	●	●	OPT	●
Query Data (Objects, D-codes, Nets, Net Length, User Data)	●	●	●	●
Measure Data (Point-to-Point, Center-to-Center, Edge-to-Edge)	●	●	●	●
Reports (Apertures, Drill, Mill)	●	●	●	●
Redline Notes (Document Changes, Problems, and More)	●	●	●	●
Dimensioning (Create Fabrication Drawings, Document Board Size, and More)	●	●	●	●
Drawing (Drill Charts, Balloon Notes, and More)	●	●	●	●
Browse Errors Directly from Navigator (Quickly Step Through Violations, Repair, and Check-off)	●	●	●	●
Copper Area Calculation (Fast and Accurate)	●	●	●	●
Graphical Find Duplicates (Quickly Locate and Remove Duplicate Data Objects, such as Flashes, Draws, and More)	●	●	●	●
Graphical Layer Compare (Compare Any Two Layers Quickly and Accurately, Browse Differences Through the Navigator)	●	●	●	●
Design Information Queries (Quickly check Min. Air Gap, Min. Trace Width, Number of Conductive Layers, Number of Drill Hits, and More)	●	●	●	●
DRC w/AutoCorrect (Track-to-Track, Track-to-Pad, Pad-to-Pad, Min. Track, Min. Pad, Board Edge, and More)	●	●	●	●
Graphical Netlist Comparison (Shorts, Opens, No Copper for Net, No External Net for Copper. Errors are Highlighted Using Navigator)	●	●	OPT	●
Pin-Point Netlist Errors (Quickly Locates Short and Open Errors from Netlist Comparison Results and Highlights the Location)	●	●	OPT	●
DfM/DfF w/AutoCorrect (Acid Traps, Resist Slivers, Copper Slivers, Starved & Isolated Thermals, Solder Mask Slivers & Bridges, Pin Holes, Registration, and More)	●	●	OPT	OPT
Embedded Passive Analysis (Passive Alignment, Bar Overlap, Bar Extension, Bar Width, Passive-to-Copper, Passive-to-Drill, and More)	●	●	OPT	OPT
Powerful Macro Developer (Drag-and-Drop Capabilities and More)	●	●	●	●
Load, Run, and Record (Support for Start-Up, Shut-Down, and On-Load Macros)	●	●	●	●
Support for "Nested" Macros (Embed Macros within Macros)	●	●	●	●
Integrated Debugger (Watch Points, Stops, Step-Thru, and More)	●	●	●	●
Database Navigator (Allows Quick and Easy Access to Layers, Apertures, Netlists, and More)	●	●	●	●
Custom Aperture Editor (Build Special Pads, Logos, and More)	●	●	●	●
Object Level Polarity (Work with Pos & Neg Data on the Fly, Eliminate the Need for Composites)	●	●	●	●
Layer Sets (Define Layer Sets for Blind & Buried Vias and MCM Stack-Up)	●	●	●	●
Interactive Data Grouping (Group Objects Together for Fast and Easy Editing)	●	●	●	●
HyperNETLIST Extraction (Supports SMT, Thru-Hole, Blind & Buried, and MCM)	●	●	●	●
Interactive Draw-to-Flash Conversion (See Automatic Draw-to-Flash below)	●	●	●	●
Draw-to-Custom Conversion (Convert Drawn Graphics into a Custom Aperture)	●	●	●	●
Raster-to-Vector Conversion (Convert Raster Fill Polygons to Vector Fill for Older Plotters)	●	●	●	●
Silkscreen Clipping (Clips Silkscreen Away From Pads)	●	●	●	●
Composite-to-Layer (Flattens Any Composite Down to a Single Positive Layer)	●	●	●	●
Pad Removal (Isolated or Redundant)	●	●	●	●
Tear-Dropping (True-Shape and Snoman)	●	●	●	●
Layer Spread (Tile All Layers to Single Sheet of Film)	●	●	●	●
Layer Scaling	●	●	●	●
Merge Multiple PCB Files	●	●	●	●
Automatic Draw-to-Flash Conversion (Convert All Layers at Once, Use Mask Layer as Guide, and More)	●	●	●	●
Basic Panelization (Step and Repeat Your Data Fast)	●	●	●	●
Intelligent Step & Repeat Codes (Gerber and NC Data)	●	●	●	●
Stencil Enhancement (Quickly Enhance Generic Paste Stencils with IPC-7525 Shape Definitions)	●	●	●	●
Automatic Solder Mask Generation and Optimization	●	●	●	●
Automatic Paste Mask Generation and Optimization	●	●	●	●
NC-Drill Editing (Create, Add, Edit, Sort, Multiple Tool Tables, Advanced Mfg Features, and More)	●	●	●	●
Advanced Panelization (Step Multiple .GTD Files, Full Venting/Thieving, Robber Bars, and More)	●	●	●	OPT
Venting/Thieving (User-Definable Patterns: Solid, Dot, Hatch, Starburst; Integrated with Advanced Panelization)	●	●	●	OPT
Panelize Multiple Data-sets (Using Advanced Panelization)	●	●	●	OPT
NC-Mill Editing (Create, Add, Edit, Sort, Multiple Tool Tables, User-Defined Tabs, Advanced Mfg. Features, and More)	●	●	●	OPT
DirectCAM Import (Support for CAM350 Through Version 8.X)	●	OPT	OPT	OPT
PADS ASCII Import (Support for PowerPCB)	●	OPT	OPT	OPT

Note: Features and bundles are subject to change without notice.