

Pulsonix Version 7.6 Release



Scaled Symbols

Pulsonix Version 7.6 introduces the ability to scale symbols. There are times when an imported design has symbols that are too large for example. You can now select and scale them to fit into the scheme of your design. It also allows you to scale symbols that are multi-functional, for drawing sheet borders and suchlike. Symbol scaling is easily performed using the Properties dialog and a simple scaling factor. Schematic Symbols and Documentation Symbols can be scaled. Scaled symbols can at any time, be returned to their original scale.

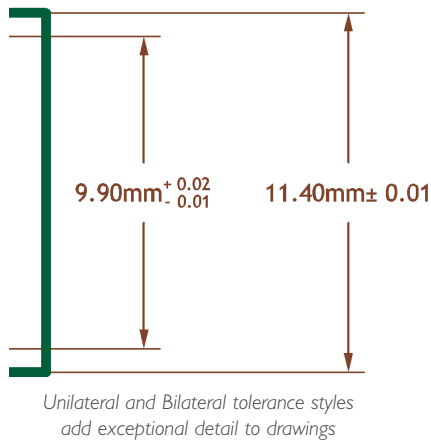
Scaled symbols allows exact sizes to be achieved using just one symbol source

COMPANY NAME: Pulsonix			
DESIGN TITLE: Project 1066			
AUTHOR: Bob Williams	LAST SAVED: 12/01/2012	PAGE:	REVISION:
CHECKED:	DATE:	DRAWING NO:	
ISSUED:	DATE:	SCALE: 1:1	SHEET OF

COMPANY NAME: Pulsonix			
DESIGN TITLE: Project 1066			
AUTHOR: Bob Williams	LAST SAVED: 12/01/2012	PAGE:	REVISION:
CHECKED:	DATE:	DRAWING NO:	
ISSUED:	DATE:	SCALE: 1:1	SHEET OF

Tolerances in Dimensions

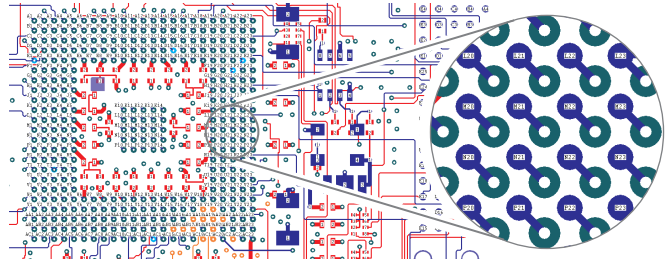
Further adding to the advanced drawing capability of Pulsonix, Dimension Tolerances can be shown for both Unilateral and Bilateral tolerance styles. Tolerances can be added to existing local dimensions or to dimension defaults for use at all times in the design process using a standard format and tolerance. Tolerances are individually styled to allow their font and size to be customised as required.



Unilateral and Bilateral tolerance styles add exceptional detail to drawings

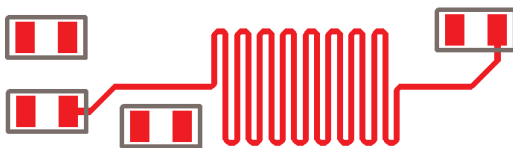
Display Pad Names in pads

Pad Names can now be displayed within the pad itself. In addition to the current methods for displaying Pad Names this adds the ability to draw all pad names as scalable numbers within the pad itself. This feature means accurate and fast pad identification when the visible location of these items is essential.



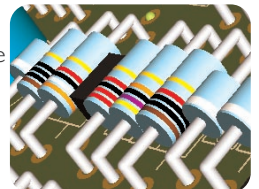
Interactive High Speed (Cost option) - Serpentine Routing Mitres

As part of the expanded support for advanced technology features, release 7.6 introduces the ability to use 45 degree, orthogonal and user defined Mitres to serpentine routing. Where square or 45 degree corners are preferred to 'rounded' corners, you can now specify these as a simple check box preference in the serpentine dialog.



3 or 4 Resistor Bands in 3D Viewer

When using the 3D Viewer and displaying resistors, diodes and components which have value stripes and tolerances, you can now choose the format of the stripe. Stripes can be defined as 3 plus 1 or 4 plus 1 bands to comply with the different standards available.



Windows 8 Support

With the official release of the Windows 8 operating system from Microsoft, Pulsonix release 7.6 is fully supported and certified. As an MSD certified partner, Pulsonix has kept track of progress with Windows 8 and has been constantly tested during its development using pre-release versions of this new operating system.

Additional Features Summary

- New advanced commands in Report Maker
- Ability to change Symbol Origin size
- Ability to change Grid drawing order
- Show Grids as small 'crosses' in addition to dot and lines
- Commands to move cursor 10 grid steps
- View actual size in design
- Ability to define Attribute defaults
- Ability to define and validate attribute strings
- Extension to wildcards for advanced coverage
- Save Block Symbols with Block Designs
- Measure tool added to all graphical editors
- New snap options for Construction Lines feature
- Ability to suppress components in STEP export
- Significant speed improvement in Optimise Nets
- New component pad keep in/out areas
- New Select Track Path option
- Cadence Allegro PCB Design Import (Cost Option)
- Plus more new additional features and enhancements

Pulsonix 20 Miller Court, Severn Drive, Tewkesbury, Glos, GL20 8DN, UK
Tel: +44 (0)1684 296 551 Fax: +44 (0)1684 296 515
Email: sales@pulsonix.com Web: www.pulsonix.com