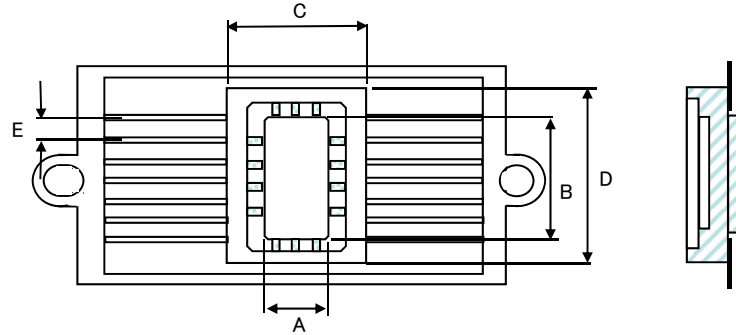
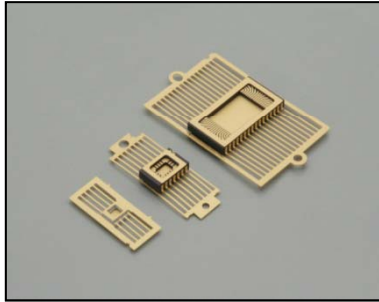


Inquiries about
the product

NTK CSOP (Ceramic – Small Outline Packages)



UNIT:inch

LEAD COUNT	CAVITY				OVERALL			LAYER THICKNESS				LEAD		NTK MATERIAL CODE B:Black W:White	CONNECTION (0:NON-Connect)		DRAWING NO.
	DIE CAV.			UP(U) DOWN(D)				1st	2nd	3rd	TOTAL	PITCH	STAND OFF HEIGHT		SEAL RING	DIE ATTACH	
	A	X	B		C	X	D										
8	0.134	x	0.134	U	0.255	x	0.255	0.020	0.020	0.010	0.050	0.050	B	-	-	IF - 2162B	
10	0.150	x	0.150	U	0.255	x	0.255	0.020	0.020	0.010	0.050	0.050	B	0	0	IF - 2276A	
10	0.150	x	0.150	U	0.255	x	0.255	0.019	0.019	0.020	0.058	0.050	B	No.1,10	No.5	IF - 2671A-MO	
10	0.195	x	0.195	U	0.255	x	0.255	0.030	0.018	-	0.048	0.050	B	0	No.5	IF - 2977A-MO	
10	0.220	x	0.150	U	0.285	x	0.255	0.020	0.020	0.010	0.050	0.050	B	0	0	IF - 2903A	
14	0.135	x	0.095	U	0.374	x	0.250	0.015	0.024	0.015	0.090	0.050	B	0	0	IF - 2119B-MO	
14	0.150	x	0.120	U	0.374	x	0.250	0.015	0.025	0.015	0.090	0.050	B	PAD C	PAD A, B	IF - 2144D-MO	
14	0.150	x	0.150	U	0.350	x	0.255	0.020	0.020	0.010	0.050	0.050	B	0	0	IF - 2055A	
14	0.161	x	0.147	U	0.340	x	0.255	0.016	0.020	0.060	0.078	0.050	B	VSS	VSS	IF - 2958A-MO	
14	0.165	x	0.130	U	0.392	x	0.272	0.010	0.025	0.010	0.045	0.050	B	0	0	IF - 2416AA	
14	0.165	x	0.130	U	0.392	x	0.272	0.010	0.025	0.010	0.045	0.050	B	0	No.4,5,6	IF - 2945A	
14	0.180	x	0.133	U	0.383	x	0.255	0.020	0.025	0.010	0.070	0.050	B	0	0	IF - 2669A-MO	



COMMUNICATION MEDIA COMPONENTS GROUP

NGK SPARK PLUG CO.,LTD.
2808,IWASAKI,KOMAKI,AICHI,485.JAPAN

Inquiries about
the product

UNIT: inch

LEAD COUNT	CAVITY				OVERALL			LAYER THICKNESS				LEAD		NTK MATERIAL CODE B:Black W:White	CONNECTION (0:NON-Connect)		DRAWING NO.
	DIE CAV.			UP(U) DOWN(D)				1st	2nd	3rd	TOTAL	PITCH	STAND OFF HEIGHT		SEAL RING	DIE ATTACH	
	A	X	B		C	X	D										
14	0.260	x	0.161	U	0.383	x	0.255	0.020	0.025	0.010	0.090	0.050	B	0	0	IF - 2545A-MO	
14	0.313	x	0.201	U	0.383	x	0.265	0.040	0.010	0.010	0.060	0.050	B	0	No.2,3,5,6,10,12	IF - 2488A	
14	0.370	x	0.285	U	0.470	x	0.450	0.020	0.020	0.020	0.095	0.050	B	0	-	IF - 2527A-MO	
14	0.370	x	0.285	U	0.470	x	0.450	0.020	0.050	0.020	0.125	0.050	B	0	-	IF - 2906A-MO	
16	0.160	x	0.135	U	0.410	x	0.270	0.010	0.020	0.100	0.130	0.050	B	PAD C	PAD A,B	IF - 2146A	
16	0.165	x	0.150	U	0.392	x	0.272	0.010	0.020	0.010	0.040	0.050	W	0	0	IF - 2036D	
16	0.220	x	0.140	U	0.400	x	0.270	0.020	0.020	0.010	0.050	0.050	B	0	0	IF - 327AA	
16	0.226	x	0.144	U	0.400	x	0.270	0.030	0.030	0.010	0.105	0.050	B	0	No.10	IF - 2297A-MO	
16	0.275	x	0.195	U	0.420	x	0.310	0.020	0.030	0.010	0.089	0.050	B	0	0	IF - 2491-MO	
16	0.300	x	0.171	U	0.415	x	0.280	0.020	0.020	0.020	0.060	0.050	B	No.14	0	IF - 2344C-MO	
18	0.240	x	0.240	U	0.355	x	0.355	0.020	0.020	0.008	0.068	0.050	B	0	0	IF - 2910A-MO	
20	0.210	x	0.210	U	0.400	x	0.400	0.020	0.020	0.010	0.050	0.050	B	0	0	IF - 2522A	
20	0.250	x	0.140	U	0.480	x	0.295	0.020	0.025	0.020	0.065	0.050	B	No.10	0	IF - 2378A	
20	0.250	x	0.140	U	0.485	x	0.295	0.015	0.025	0.010	0.086	0.050	B	0	0	IF - 2246B-MO	
20	0.283	x	0.170	U	0.504	x	0.293	0.015	0.025	0.024	0.093	0.050	B	0	0	IF - 2967A-MO	
20	0.320	x	0.165	U	0.480	x	0.295	0.015	0.025	0.010	0.086	0.050	B	0	0	IF - 2187A	
20	0.850	x	0.170	U	1.000	x	0.295	0.020	0.040	0.030	0.090	0.100	B	0	No.5, 10	IF - 2334A-MO	
24	0.365	x	0.220	U	0.610	x	0.400	0.010	0.020	0.010	0.040	0.050	B	0	G PAD, No.12	IF - 2149C	
28	0.250	x	0.200	U	0.720	x	0.500	0.020	0.025	0.012	0.092	0.050	B	PAD C	PAD A & B	IF - 2197-MO	
28	0.250	x	0.250	U	0.720	x	0.410	0.030	0.030	0.010	0.070	0.050	B	No.7	No.7	IF - 2238B	
28	0.250	x	0.250	U	0.720	x	0.500	0.020	0.025	0.012	0.092	0.050	B	0	0	IF - 2250A-MO	
28	0.310	x	0.235	U	0.720	x	0.390	0.020	0.020	0.010	0.050	0.050	B	0	No.14	IF - 2047F	
28	0.340	x	0.300	U	0.700	x	0.500	0.020	0.030	0.010	0.060	0.050	B	0	No.25/PAD A	IF - 2397AA	
28	0.350	x	0.280	U	0.732	x	0.410	0.015	0.030	0.030	0.110	0.050	B	0	0	IF - 2352AA	



COMMUNICATION MEDIA COMPONENTS GROUP

NGK SPARK PLUG CO.,LTD.
2808,IWASAKI,KOMAKI,AICHI,485,JAPAN

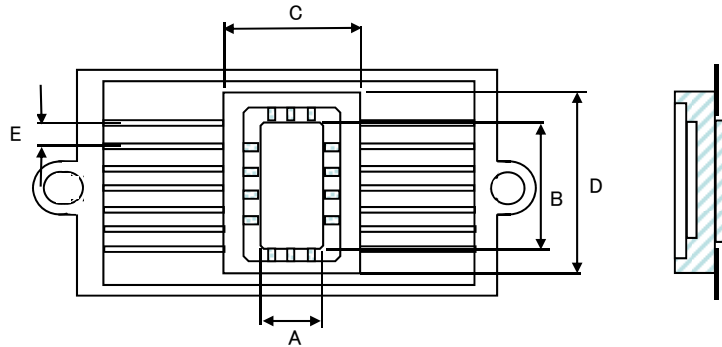
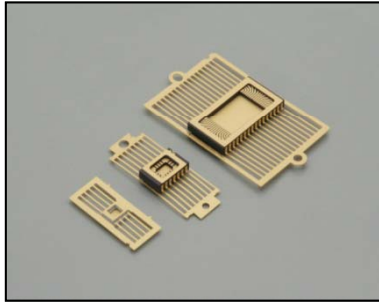
Inquiries about
the product

UNIT: inch

LEAD COUNT	CAVITY				OVERALL			LAYER THICKNESS				LEAD		NTK MATERIAL CODE B:Black W:White	CONNECTION (0:NON-Connect)		DRAWING NO.	
	DIE CAV.			UP(U) DOWN(D)				1st	2nd	3rd	TOTAL	PITCH	STAND OFF HEIGHT		SEAL RING	DIE ATTACH		
	A	X	B		C	X	D											
28	0.410	×	0.390	U	0.720	×	0.500	0.020	0.025	0.012	0.092	0.050		B	0	PAD A, D	IF - 2414-MO	
28	0.425	×	0.280	U	0.720	×	0.410	0.020	0.020	0.022	0.097	0.050		B	0	0	IF - 2040B-MO	
28	0.510	×	0.305	U	0.732	×	0.410	0.020	0.030	0.025	0.110	0.050		B	0	-	IF - 2569A-MO	
30	0.409	×	0.189	U	0.602	×	0.307	0.025	0.020	0.020	0.085	0.039		B	0	GND PAD	IF - 2286A	
32	0.300	×	0.300	U	0.820	×	0.590	0.020	0.030	0.030	0.080	0.050		B	0	No.32	IF - 2268B	
32	0.368	×	0.228	U	0.820	×	0.410	0.020	0.020	0.020	0.095	0.050		B	0	0	IF - 2391D-MO	
32	0.425	×	0.270	U	0.820	×	0.410	0.020	0.020	0.035	0.075	0.050		B	No.16	0	IF - 2426A-MO	
32	0.450	×	0.320	U	0.820	×	0.435	0.015	0.030	0.020	0.100	0.050		B	0	0	IF - 2924A-MO	
32	0.450	×	0.320	U	0.820	×	0.435	0.015	0.030	0.020	0.100	0.050		B	0	0	IF - 2215A	
32	0.510	×	0.396	U	0.820	×	0.480	0.020	0.020	0.020	0.060	0.050		B	0	No.16	IF - 2191B	
40	0.876	×	0.223	U	1.050	×	0.354	0.015	0.045	0.025	0.085	0.050		B	No.23	No.23	IF - 2965A-MO	

Inquiries about
the product

NTK CSOP (Ceramic – Small Outline Packages)



UNIT: mm

LEAD COUNT	CAVITY			OVERALL			LAYER THICKNESS				LEAD		NTK MATERIAL CODE B:Black W:White	CONNECTION (0:NON-Connect)		DRAWING NO.
	DIE CAV.		UP(U) DOWN(D)				1st	2nd	3rd	TOTAL	TOTAL PITCH	STAND OFF HEIGHT		SEAL RING	DIE ATTACH	
	A	X		B	C	X							D			
8	3.404	x	3.404	U	6.477	x	6.477	0.508	0.508	0.254	1.270	1.270	B	-	-	IF - 2162B
10	3.810	x	3.810	U	6.477	x	6.477	0.508	0.508	0.254	1.270	1.270	B	0	0	IF - 2276A
10	3.810	x	3.810	U	6.477	x	6.477	0.483	0.483	0.508	1.473	1.270	B	No.1,10	No.5	IF - 2671A-MO
10	4.953	x	4.953	U	6.477	x	6.477	0.762	0.457	-	1.219	1.270	B	0	No.5	IF - 2977A-MO
10	5.588	x	3.810	U	7.239	x	6.477	0.508	0.508	0.254	1.270	1.270	B	0	0	IF - 2903A
14	3.429	x	2.413	U	9.500	x	6.350	0.381	0.610	0.381	2.286	1.270	B	0	0	IF - 2119B-MO
14	3.810	x	3.048	U	9.500	x	6.350	0.381	0.635	0.381	2.286	1.270	B	PAD C	PAD A, B	IF - 2144D-MO
14	3.810	x	3.810	U	8.890	x	6.477	0.508	0.508	0.254	1.270	1.270	B	0	0	IF - 2055A
14	4.089	x	3.734	U	8.636	x	6.477	0.406	0.508	1.524	1.981	1.270	B	VSS	VSS	IF - 2958A-MO
14	4.191	x	3.302	U	9.957	x	6.909	0.254	0.635	0.254	1.143	1.270	B	0	0	IF - 2416AA
14	4.191	x	3.302	U	9.957	x	6.909	0.254	0.635	0.254	1.143	1.270	B	0	No.4,5,6	IF - 2945A
14	4.572	x	3.378	U	9.728	x	6.477	0.508	0.635	0.254	1.778	1.270	B	0	0	IF - 2669A-MO



COMMUNICATION MEDIA COMPONENTS GROUP

NGK SPARK PLUG CO.,LTD.
2808,IWASAKI,KOMAKI,AICHI,485.JAPAN

Inquiries about
the product

UNIT: mm

LEAD COUNT	CAVITY			OVERALL			LAYER THICKNESS				LEAD		NTK MATERIAL CODE B:Black W:White	CONNECTION (0:NON-Connect)		DRAWING NO.	
	DIE CAV.						UP(U) DOWN(D)	1st	2nd	3rd	TOTAL	TOTAL PITCH		STAND OFF HEIGHT	SEAL RING		DIE ATTACH
	A	X	B	C	X	D											
14	6.604	×	4.089	U	9.728	×	6.477	0.508	0.635	0.254	2.286	1.270		B	0	0	IF - 2545A-MO
14	7.950	×	5.105	U	9.728	×	6.731	1.016	0.254	0.254	1.524	1.270		B	0	No.2,3,5,6,10,12	IF - 2488A
14	9.398	×	7.239	U	11.938	×	11.430	0.508	0.508	0.508	2.413	1.270		B	0	-	IF - 2527A-MO
14	9.398	×	7.239	U	11.938	×	11.430	0.508	1.270	0.508	3.175	1.270		B	0	-	IF - 2906A-MO
16	4.064	×	3.429	U	10.414	×	6.858	0.254	0.508	2.540	3.302	1.270		B	PAD C	PAD A,B	IF - 2146A
16	4.191	×	3.810	U	9.957	×	6.909	0.254	0.508	0.254	1.016	1.270		W	0	0	IF - 2036D
16	5.588	×	3.556	U	10.160	×	6.858	0.508	0.508	0.254	1.270	1.270		B	0	0	IF - 327AA
16	5.740	×	3.658	U	10.160	×	6.858	0.762	0.762	0.254	2.667	1.270		B	0	No.10	IF - 2297A-MO
16	6.985	×	4.953	U	10.668	×	7.874	0.508	0.762	0.254	2.261	1.270		B	0	0	IF - 2491-MO
16	7.620	×	4.343	U	10.541	×	7.112	0.508	0.508	0.508	1.524	1.270		B	No.14	0	IF - 2344C-MO
18	6.096	×	6.096	U	9.017	×	9.017	0.508	0.508	0.203	1.727	1.270		B	0	0	IF - 2910A-MO
20	5.334	×	5.334	U	10.160	×	10.160	0.508	0.508	0.254	1.270	1.270		B	0	0	IF - 2522A
20	6.350	×	3.556	U	12.192	×	7.493	0.508	0.635	0.508	1.651	1.270		B	No.10	0	IF - 2378A
20	6.350	×	3.556	U	12.319	×	7.493	0.381	0.635	0.254	2.184	1.270		B	0	0	IF - 2246B-MO
20	7.188	×	4.318	U	12.802	×	7.442	0.381	0.635	0.610	2.362	1.270		B	0	0	IF - 2967A-MO
20	8.128	×	4.191	U	12.192	×	7.493	0.381	0.635	0.254	2.184	1.270		B	0	0	IF - 2187A
20	21.590	×	4.318	U	25.400	×	7.493	0.508	1.016	0.762	2.286	2.540		B	0	No.5, 10	IF - 2334A-MO
24	9.271	×	5.588	U	15.494	×	10.160	0.254	0.508	0.254	1.016	1.270		B	0	G PAD, No.12	IF - 2149C
28	6.350	×	5.080	U	18.288	×	12.700	0.508	0.635	0.305	2.337	1.270		B	PAD C	PAD A & B	IF - 2197-MO
28	6.350	×	6.350	U	18.288	×	10.414	0.762	0.762	0.254	1.778	1.270		B	No.7	No.7	IF - 2238B
28	6.350	×	6.350	U	18.288	×	12.700	0.508	0.635	0.305	2.337	1.270		B	0	0	IF - 2250A-MO
28	7.874	×	5.969	U	18.288	×	9.906	0.508	0.508	0.254	1.270	1.270		B	0	No.14	IF - 2047F
28	8.636	×	7.620	U	17.780	×	12.700	0.508	0.762	0.254	1.524	1.270		B	0	No.25/PAD A	IF - 2397AA
28	8.890	×	7.112	U	18.593	×	10.414	0.381	0.762	0.762	2.794	1.270		B	0	0	IF - 2352AA



COMMUNICATION MEDIA COMPONENTS GROUP

NGK SPARK PLUG CO.,LTD.
2808,IWASAKI,KOMAKI,AICHI,485.JAPAN

Inquiries about
the product

UNIT: mm

LEAD COUNT	CAVITY			OVERALL			LAYER THICKNESS				LEAD		NTK MATERIAL CODE B:Black W:White	CONNECTION (0:NON-Connect)		DRAWING NO.	
	DIE CAV.						UP(U) DOWN(D)	1st	2nd	3rd	TOTAL	TOTAL PITCH		STAND OFF HEIGHT	SEAL RING		
	A	X	B	C	X	D											
28	10.414	×	9.906	U	18.288	×	12.700	0.508	0.635	0.305	2.337	1.270		B	0	PAD A, D	IF - 2414-MO
28	10.795	×	7.112	U	18.288	×	10.414	0.508	0.508	0.559	2.464	1.270		B	0	0	IF - 2040B-MO
28	12.954	×	7.747	U	18.593	×	10.414	0.508	0.762	0.635	2.794	1.270		B	0	-	IF - 2569A-MO
30	10.389	×	4.801	U	15.291	×	7.798	0.635	0.508	0.508	2.159	0.991		B	0	GND PAD	IF - 2286A
32	7.620	×	7.620	U	20.828	×	14.986	0.508	0.762	0.762	2.032	1.270		B	0	No.32	IF - 2268B
32	9.347	×	5.791	U	20.828	×	10.414	0.508	0.508	0.508	2.413	1.270		B	0	0	IF - 2391D-MO
32	10.795	×	6.858	U	20.828	×	10.414	0.508	0.508	0.889	1.905	1.270		B	No.16	0	IF - 2426A-MO
32	11.430	×	8.128	U	20.828	×	11.049	0.381	0.762	0.508	2.540	1.270		B	0	0	IF - 2924A-MO
32	11.430	×	8.128	U	20.828	×	11.049	0.381	0.762	0.508	2.540	1.270		B	0	0	IF - 2215A
32	12.954	×	10.058	U	20.828	×	12.192	0.508	0.508	0.508	1.524	1.270		B	0	No.16	IF - 2191B
40	22.250	×	5.664	U	26.670	×	8.992	0.381	1.143	0.635	2.159	1.270		B	No.23	No.23	IF - 2965A-MO