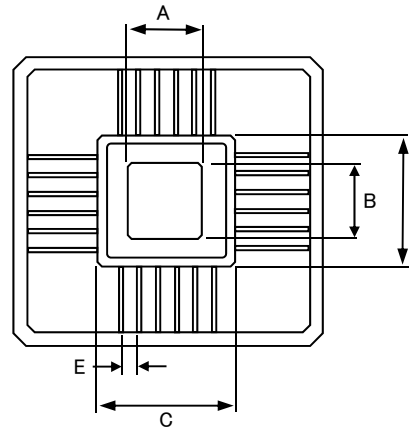
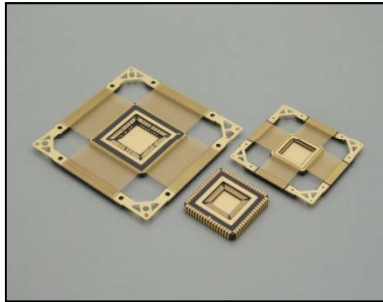


NTK CQFP (Ceramic – Quad Flat Packages)

Inquiries about the product



UNIT:inch

LEAD COUNT	CAVITY			OVERALL			LAYER THICKNESS				LEAD		NTK MATERIAL CODE B:Black W:White	CONNECTION (0:NON-Connect)		DRAWING NO.	
	DIE CAV.						UP(U) DOWN(D)	1st	2nd	3rd	TOTAL	PITCH		STAND OFF HEIGHT	SEAL RING		DIE ATTACH
	A	X	B	C	X	D											
24	0.315	x	0.315	U	0.551	x	0.551	0.020	0.039	0.020	0.079	0.050		B	No.19	No.7	IF - 2961A-MO
28	0.250	x	0.250	U	0.450	x	0.450	0.020	0.025	0.020	0.065	0.050		B	0	0	IF - 2701L
28	0.500	x	0.300	U	1.450	x	0.450	0.020	0.020	0.060	0.100	0.100		B	0	GND PAD	IF - 2627A-MO
32	0.230	x	0.200	U	0.550	x	0.550	0.030	0.020	0.020	0.070	0.050		B	0	GND RING/HEAT SINK PAD	IF - 2325A
44	0.300	x	0.300	U	0.650	x	0.650	0.020	0.020	0.030	0.070	0.050		B	0	0	IF - 2735A
44	0.340	x	0.340	U	0.650	x	0.650	0.015	0.030	0.020	0.065	0.050		B	0	-	IF - 2749B-MO
48	0.350	x	0.350	U	0.560	x	0.560	0.020	0.030	0.020	0.070	0.040		B	0	0	IF - 2266AA
52	0.350	x	0.350	U	0.950	x	0.950	0.020	0.020	0.030	0.070	0.050		B	0	0	IF - 2760A
68	0.300	x	0.300	U	0.950	x	0.950	0.020	0.020	0.040	0.080	0.050		B	0	0	IF - 2179A
68	0.350	x	0.350	U	0.950	x	0.950	0.020	0.030	0.020	0.070	0.050		B	0	0	IF - 2703E
68	0.400	x	0.400	U	0.950	x	0.950	0.020	0.025	0.020	0.065	0.050		B	0	0	IF - 2722A
68	0.450	x	0.450	U	0.950	x	0.950	0.030	0.030	0.030	0.090	0.050		B	0	0	IF - 2752A-MO



COMMUNICATION MEDIA COMPONENTS GROUP

NGK SPARK PLUG CO.,LTD.
2808,IWASAKI,KOMAKI,AICHI,485,JAPAN

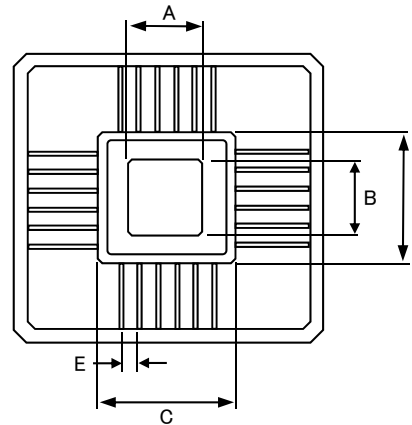
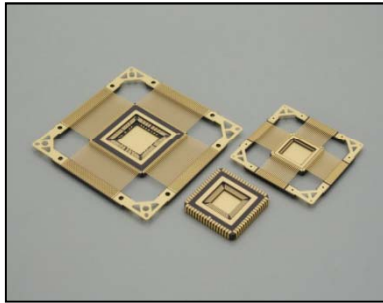
Inquiries about
the product

UNIT: inch

LEAD COUNT	CAVITY			OVERALL	LAYER THICKNESS				LEAD		NTK MATERIAL CODE B:Black W:White	CONNECTION (0:NON-Connect)		DRAWING NO.		
	DIE CAV.				UP(U) DOWN(D)	1st	2nd	3rd	TOTAL	PITCH		STAND OFF HEIGHT	SEAL RING		DIE ATTACH	
	A	X	B													C
68	0.450	x	0.450	U	0.950	x	0.950	0.030	0.030	0.030	0.090	0.050	B	0	0	IF - 2764A-MO
68	0.650	x	0.650	U	0.950	x	0.950	0.020	0.025	0.020	0.065	0.050	B	0	0	IF - 2968A
84	0.380	x	0.380	U	0.650	x	0.650	0.025	0.025	0.025	0.075	0.025	B	No.29	No.29	IM - 4741CA-MO
84	0.420	x	0.420	U	1.150	x	1.150	0.020	0.020	0.040	0.080	0.050	B	0	0	IF - 2175AA
84	0.440	x	0.440	U	0.650	x	0.650	0.020	0.020	0.025	0.065	0.025	B	No.29	No.29	IM - 4871A-MO
84	0.470	x	0.470	U	1.150	x	1.150	0.020	0.020	0.010	0.050	0.050	B	0	0	IF - 2957A
84	0.790	x	0.790	U	1.150	x	1.150	0.020	0.020	0.030	0.070	0.050	B	-	0	IF - 2741C-MO
84	0.790	x	0.790	U	1.150	x	1.150	0.020	0.020	0.030	0.070	0.050	B	1, 42	-	IF - 2763B-MO
96	1.080	x	1.080	U	1.300	x	1.300	0.060	0.050	0.040	0.150	0.050	B	No.21	-	IM - 4767A-MO
100	0.433	x	0.354	U	0.787	x	0.551	0.014	0.040	0.025	0.079	0.025	B	0	0	IM - 8126A
132	0.390	x	0.390	U	0.950	x	0.950	0.020	0.010	0.025	0.085	0.025	B	0	0	IM - 4681AB-MO
172	0.380	x	0.380	U	1.150	x	1.150	0.020	0.015	0.020	0.090	0.025	B	0	G PAD	IM - 8106A-MO
220	1.160	x	1.160	U	1.500	x	1.500	0.075	0.075	0.030	0.180	0.025	B	No.1	No.1	IM - 4840C-MO
224	0.420	x	0.420	U	1.525	x	1.525	0.017	0.010	0.025	0.082	0.025	B	0	0	IM - 4932AA-MO
224	0.480	x	0.480	U	1.525	x	1.525	0.017	0.010	0.025	0.082	0.025	B	0	0	IM - 4934AA-MO
224	0.650	x	0.650	U	1.525	x	1.525	0.022	0.016	0.008	0.082	0.025	B	VSS	0	IM - 4519BD-MO
256	0.350	x	0.340	U	1.417	x	1.417	0.020	0.020	0.020	0.090	0.020	B	GND	GND	IM - 4993A-MO
256	0.510	x	0.510	U	1.450	x	1.450	0.020	0.012	0.020	0.052	0.020	B	0	0	IM - 4612B
256	0.598	x	0.580	U	1.460	x	1.460	0.020	0.008	0.008	0.091	0.020	B	0	-	IM - 8083A-MO
288	0.551	x	0.551	U	1.575	x	1.575	0.020	0.020	0.020	0.095	0.020	B	0	GND	IM - 4794AA-MO

NTK CQFP (Ceramic – Quad Flat Packages)

Inquiries about
the product



UNIT: mm

LEAD COUNT	CAVITY			OVERALL			LAYER THICKNESS				LEAD		NTK MATERIAL CODE B:Black W:White	CONNECTION (0:NON-Connect)		DRAWING NO.	
	DIE CAV.						UP(U) DOWN(D)	1st	2nd	3rd	TOTAL	TOTAL PITCH		STAND OFF HEIGHT	SEAL RING		DIE ATTACH
	A	X	B	C	X	D											
24	8.001	×	8.001	U	13.995	×	13.995	0.508	0.991	0.508	2.007	1.270		B	No.19	No.7	IF - 2961A-MO
28	6.350	×	6.350	U	11.430	×	11.430	0.508	0.635	0.508	1.651	1.270		B	0	0	IF - 2701L
28	12.700	×	7.620	U	36.830	×	11.430	0.508	0.508	1.524	2.540	2.540		B	0	GND PAD	IF - 2627A-MO
32	5.842	×	5.080	U	13.970	×	13.970	0.762	0.508	0.508	1.778	1.270		B	0	GND RING/HEAT SINK PAD	IF - 2325A
44	7.620	×	7.620	U	16.510	×	16.510	0.508	0.508	0.762	1.778	1.270		B	0	0	IF - 2735A
44	8.636	×	8.636	U	16.510	×	16.510	0.381	0.762	0.508	1.651	1.270		B	0	-	IF - 2749B-MO
48	8.890	×	8.890	U	14.224	×	14.224	0.508	0.762	0.508	1.778	1.016		B	0	0	IF - 2266AA
52	8.890	×	8.890	U	24.130	×	24.130	0.508	0.508	0.762	1.778	1.270		B	0	0	IF - 2760A
68	7.620	×	7.620	U	24.130	×	24.130	0.508	0.508	1.016	2.032	1.270		B	0	0	IF - 2179A
68	8.890	×	8.890	U	24.130	×	24.130	0.508	0.762	0.508	1.778	1.270		B	0	0	IF - 2703E
68	10.160	×	10.160	U	24.130	×	24.130	0.508	0.635	0.508	1.651	1.270		B	0	0	IF - 2722A
68	11.430	×	11.430	U	24.130	×	24.130	0.762	0.762	0.762	2.286	1.270		B	0	0	IF - 2752A-MO



COMMUNICATION MEDIA COMPONENTS GROUP

NGK SPARK PLUG CO.,LTD.
2808,IWASAKI,KOMAKI,AICHI,485,JAPAN

Inquiries about
the product

UNIT: mm

LEAD COUNT	CAVITY			OVERALL			LAYER THICKNESS				LEAD		NTK MATERIAL CODE B:Black W:White	CONNECTION (0:NON-Connect)		DRAWING NO.	
	DIE CAV.						UP(U) DOWN(D)	1st	2nd	3rd	TOTAL	TOTAL PITCH		STAND OFF HEIGHT	SEAL RING		DIE ATTACH
	A	X	B	C	X	D											
68	11.430	×	11.430	U	24.130	×	24.130	0.762	0.762	0.762	2.286	1.270		B	0	0	IF - 2764A-MO
68	16.510	×	16.510	U	24.130	×	24.130	0.508	0.635	0.508	1.651	1.270		B	0	0	IF - 2968A
84	9.652	×	9.652	U	16.510	×	0.650	0.635	0.635	0.635	1.905	0.635		B	No.29	No.29	IM - 4741CA-MO
84	10.668	×	10.668	U	29.210	×	29.210	0.508	0.508	1.016	2.032	1.270		B	0	0	IF - 2175AA
84	11.176	×	11.176	U	16.510	×	16.510	0.508	0.508	0.635	1.651	0.635		B	No.29	No.29	IM - 4871A-MO
84	11.938	×	11.938	U	29.210	×	29.210	0.508	0.508	0.254	1.270	1.270		B	0	0	IF - 2957A
84	20.066	×	20.066	U	29.210	×	29.210	0.508	0.508	0.762	1.778	1.270		B	-	0	IF - 2741C-MO
84	20.066	×	20.066	U	29.210	×	29.210	0.508	0.508	0.762	1.778	1.270		B	1, 42	-	IF - 2763B-MO
96	27.432	×	27.432	U	33.020	×	33.020	1.524	1.270	1.016	3.810	1.270		B	No.21	-	IM - 4767A-MO
100	10.998	×	8.992	U	19.990	×	13.995	0.356	1.016	0.635	2.007	0.635		B	0	0	IM - 8126A
132	9.906	×	9.906	U	24.130	×	24.130	0.508	0.254	0.635	2.159	0.635		B	0	0	IM - 4681AB-MO
172	9.652	×	9.652	U	29.210	×	29.210	0.508	0.381	0.508	2.286	0.635		B	0	G PAD	IM - 8106A-MO
220	29.464	×	29.464	U	38.100	×	38.100	1.905	1.905	0.762	4.572	0.635		B	No.1	No.1	IM - 4840C-MO
224	10.668	×	10.668	U	38.735	×	38.735	0.432	0.254	0.635	2.083	0.635		B	0	0	IM - 4932AA-MO
224	12.192	×	12.192	U	38.735	×	38.735	0.432	0.254	0.635	2.083	0.635		B	0	0	IM - 4934AA-MO
224	16.510	×	16.510	U	38.735	×	38.735	0.559	0.406	0.203	2.083	0.635		B	VSS	0	IM - 4519BD-MO
256	8.890	×	8.636	U	35.992	×	35.992	0.508	0.508	0.508	2.286	0.500		B	GND	GND	IM - 4993A-MO
256	12.954	×	12.954	U	36.830	×	36.830	0.508	0.305	0.508	1.321	0.508		B	0	0	IM - 4612B
256	15.189	×	14.732	U	37.084	×	37.084	0.508	0.203	0.203	2.311	0.508		B	0	-	IM - 8083A-MO
288	13.995	×	13.995	U	40.005	×	40.005	0.508	0.508	0.508	2.413	0.500		B	0	GND	IM - 4794AA-MO