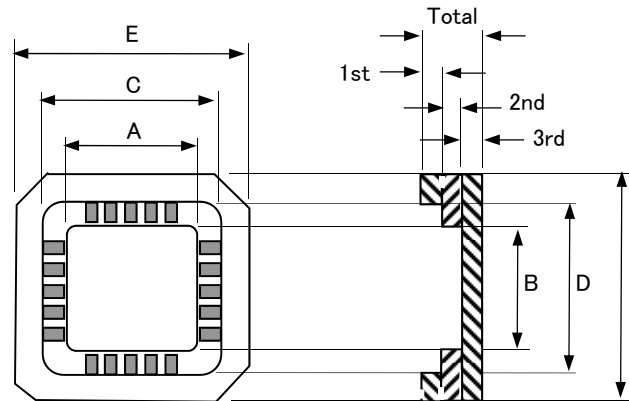
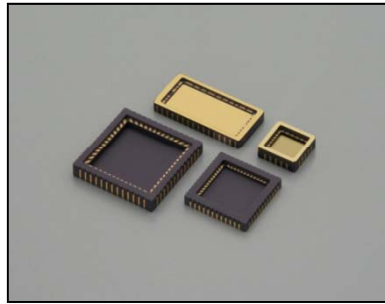


NTK CLCC (Ceramic – Leadless Chip Carrier)

Inquiries about
the product



UNIT: inch

LEAD COUNT	PKG TYPE	CAVITY						OVERALL			LAYER THICKNESS				NTK MATERIAL CODE B:Black W:White	CONNECTION (0:NON-Connect)		DRAWING NO.
		DIE CAV.			TOP CAV.						1st	2nd	3rd	TOTAL		SEAL RING	DIE ATTACH	
		A	X	B	C	X	D	E	X	F								
3	CLCC		x			x		0.105	x	0.080	0.020			0.020	B	-	-	IR - 6010A-MO
3	CLCC	0.070	x	0.050				0.120	x	0.100	0.020	0.020		0.040	B	0	SEE DRAWING	IR - 5070AA
3	CLCC	0.130	x	0.110		x		0.200	x	0.180	0.020	0.010		0.030	B	-	No.2	IR - 6409A-MO
4	CLCC		x			x		0.110	x	0.095	0.020			0.020	B	-	-	IR - 5960A-MO
4	CLCC	0.140	x	0.090		x		0.220	x	0.150	0.040	0.015		0.055	B	0	No.1	IR - 5113A
4	CLCC	0.140	x	0.090		x		0.220	x	0.150	0.040	0.015		0.055	B	0	-	IR - 5933A
4	CLCC	0.185	x	0.120		x		0.245	x	0.180	0.017	0.010		0.027	B	-	No.1	IR - 6362AA-MO
6	CLCC	0.100	x	0.090	0.175	x	0.100	0.245	x	0.170	0.030	0.010	0.020	0.060	B	0	No.3	IR - 5052BB
12	CLCC	0.217	x	0.209	0.343	x	0.217	0.421	x	0.295	0.020	0.020	0.039	0.079	B	-	No.2	IR - 8423A-MO
16	CLCC	0.120	x	0.120	0.160	x	0.160	0.250	x	0.250	0.020	0.020	0.015	0.055	B	0	0	IR - 5063F
16	CLCC	0.130	x	0.130	0.180	x	0.180	0.250	x	0.250	0.025	0.040	0.040	0.105	B	No.8	0	IR - 6216A-MO
18	CLCC	0.210	x	0.145	0.280	x	0.215	0.350	x	0.285	0.040	0.020	0.020	0.080	B	9,10,11,12	No.1,2,15,16,17,18	IR - 5974A-MO



COMMUNICATION MEDIA COMPONENTS GROUP

NGK SPARK PLUG CO.,LTD.
2808,IWASAKI,KOMAKI,AICHI,485.JAPAN

Inquiries about
the product

UNIT: inch

LEAD COUNT	PKG TYPE	CAVITY						OVERALL			LAYER THICKNESS				NTK MATERIAL CODE B:Black W:White	CONNECTION (0:NON-Connect)		DRAWING NO.
		DIE CAV.			TOP CAV.						1st	2nd	3rd	TOTAL		SEAL RING	DIE ATTACH	
		A	X	B	C	X	D	E	X	F								
18	CLCC	0.210	x	0.145	0.280	x	0.215	0.350	x	0.285	0.040	0.020	0.020	0.080	B	0	0	IR - 5999A-MO
18	CLCC	0.239	x	0.174	0.281	x	0.216	0.350	x	0.285	0.015	0.020	0.015	0.050	B	0	No.18	IR - 5045B
18	CLCC	0.240	x	0.175	0.280	x	0.215	0.350	x	0.285	0.020	0.025	0.020	0.065	B	0	0	IR - 5051DA
18	CLCC	0.240	x	0.175	0.280	x	0.215	0.350	x	0.285	0.015	0.015	0.015	0.045	B	0	0	IR - 6500D-MO
20	CLCC	0.160	x	0.160	0.240	x	0.240	0.350	x	0.350	0.020	0.020	0.020	0.060	B	0	0	IR - 5517CB
20	CLCC	0.210	x	0.210	0.264	x	0.264	0.350	x	0.350	0.020	0.020	0.020	0.060	B	0	0	IR - 5705A
20	CLCC	0.210	x	0.210	0.264	x	0.264	0.350	x	0.350	0.020	0.020	0.020	0.060	B	0	No.4,5,9,10,14,15,19,20	IR - 8144A
20	CLCC	0.210	x	0.210	0.264	x	0.264	0.350	x	0.350	0.020	0.025	0.020	0.065	B	0	0	IR - 7558A-MO
20	CLCC	0.210	x	0.210	0.264	x	0.264	0.350	x	0.350	0.025	0.025	0.020	0.070	B	0	-	IR - 7935A-MO
20	CLCC	0.210	x	0.210	0.276	x	0.276	0.350	x	0.350	0.030	0.025	0.020	0.075	B	0	0	IR - 5856B-MO
20	CLCC	0.240	x	0.240	0.280	x	0.280	0.350	x	0.350	0.040	0.030	0.025	0.095	B	0	-	IR - 6107A-MO
20	CLCC	0.240	x	0.240	0.280	x	0.280	0.350	x	0.350	0.040	0.030	0.025	0.095	B	PAD A,B	PAD A,B	IR - 5259D
24	CLCC		x			x		0.335	x	0.335	0.029			0.029	B	-	-	IR - 4161A-MO
24	CLCC	0.185	x	0.185	0.245	x	0.245	0.335	x	0.335	0.015	0.030	0.015	0.060	B	0	0	IR - 5094A
24	CLCC	0.185	x	0.185	0.245	x	0.245	0.335	x	0.335	0.015	0.030	0.015	0.060	B	0	0	IR - 7944A-MO
28	CLCC	0.185	x	0.185	0.290	x	0.290	0.450	x	0.450	0.020	0.020	0.025	0.065	B	-	No.14	IR - 5778A-MO
28	CLCC	0.250	x	0.250	0.330	x	0.330	0.450	x	0.450	0.020	0.025	0.020	0.065	B	0	0	IR - 5583AA
28	CLCC	0.280	x	0.280	0.330	x	0.330	0.450	x	0.450	0.020	0.020	0.020	0.060	B	0	GND/No.14	IR - 338AA
28	CLCC	0.290	x	0.290	0.366	x	0.366	0.450	x	0.450	0.020	0.020	0.020	0.060	B	0	SEE DRAWING	IR - 5939C-MO
28	CLCC	0.300	x	0.300	0.356	x	0.356	0.450	x	0.450	0.010	0.030	0.020	0.060	B	0	0	IR - 220DA
28	CLCC	0.310	x	0.310	0.366	x	0.366	0.450	x	0.450	0.020	0.020	0.020	0.060	B	0	0	IR - 247AAW
28	CLCC	0.310	x	0.310	0.366	x	0.366	0.450	x	0.450	0.020	0.020	0.015	0.055	B	No.22	No.22	IR - 247H
28	CLCC	0.310	x	0.310	0.366	x	0.366	0.450	x	0.450	0.020	0.020	0.020	0.060	B	0	No.6,10,16,22,27	IR - 5451C
28	CLCC	0.310	x	0.310	0.366	x	0.366	0.450	x	0.450	0.020	0.025	0.020	0.065	B	0	0	IR - 5451D



COMMUNICATION MEDIA COMPONENTS GROUP

NGK SPARK PLUG CO.,LTD.
2808,IWASAKI,KOMAKI,AICHI,485.JAPAN

Inquiries about
the product

UNIT: inch

LEAD COUNT	PKG TYPE	CAVITY						OVERALL			LAYER THICKNESS				NTK MATERIAL CODE B:Black W:White	CONNECTION (0:NON-Connect)		DRAWING NO.
		DIE CAV.			TOP CAV.						1st	2nd	3rd	TOTAL		SEAL RING	DIE ATTACH	
		A	X	B	C	X	D	E	X	F								
28	CLOC	0.300	x	0.300	0.350	x	0.350	0.450	x	0.450	0.020	0.020	0.020	0.060	B	0	No.2,8,12,14,16,22,26,27	IR - 3014D
28	CLOC	0.300	x	0.300	0.350	x	0.350	0.450	x	0.450	0.020	0.020	0.020	0.060	B	0	No.2,8,12,14,16,22,26,28	IR - 3014E
28	CLOC	0.360	x	0.360		x		0.450	x	0.450	0.045	0.025		0.070	B	0	0	IR - 5929A-MO
32	CLOC	0.208	x	0.164	0.440	x	0.350	0.550	x	0.450	0.020	0.020	0.030	0.070	B	0	DA PAD	IR - 6385C-MO
32	CLOC	0.250	x	0.250	0.430	x	0.330	0.550	x	0.450	0.020	0.030	0.020	0.070	B	0	-	IR - 5654A-MO
32	CLOC	0.260	x	0.230	0.360	x	0.330	0.550	x	0.450	0.015	0.020	0.020	0.055	B	0	0	IR - 5402AA
32	CLOC	0.280	x	0.180	0.390	x	0.300	0.550	x	0.450	0.020	0.030	0.020	0.070	7	0	0	IR - 6077A
32	CLOC	0.280	x	0.250	0.360	x	0.330	0.550	x	0.450	0.020	0.025	0.020	0.065	B	0	0	IR - 5116D
32	CLOC	0.280	x	0.250	0.360	x	0.330	0.550	x	0.450	0.020	0.025	0.020	0.065	B	0	0	IR - 8539A
32	CLOC	0.280	x	0.250	0.390	x	0.330	0.550	x	0.450	0.020	0.025	0.020	0.065	B	0	0	IR - 7534A
32	CLOC	0.280	x	0.250	0.390	x	0.330	0.550	x	0.450	0.020	0.020	0.020	0.060	B	0	PAD A,B,C,D	IR - 5299B
32	CLOC	0.350	x	0.250	0.430	x	0.330	0.550	x	0.450	0.020	0.030	0.020	0.070	B	0	0	IR - 5646B
32	CLOC	0.350	x	0.300	0.450	x	0.350	0.548	x	0.448	0.020	0.020	0.025	0.065	B	-	No.16	IR - 5858A-MO
32	CLOC	0.360	x	0.280	0.440	x	0.360	0.550	x	0.450	0.020	0.025	0.025	0.070	B	0	0	IR - 285F
32	CLOC	0.390	x	0.290	0.450	x	0.350	0.550	x	0.450	0.025	0.020	0.020	0.065	B	0	0	IR - 5251E
32	CLOC	0.390	x	0.290	0.450	x	0.350	0.550	x	0.450	0.020	0.030	0.020	0.070	B	0	PAD A,B	IR - 5535A
32	CLOC	0.410	x	0.310	0.465	x	0.365	0.550	x	0.450	0.020	0.030	0.020	0.070	B	0	0	IR - 5411BA
32	CLOC	0.420	x	0.300	0.470	x	0.360	0.548	x	0.448	0.015	0.025	0.030	0.070	B	0	No.16	IR - 5753B-MO
32	CLOC	0.430	x	0.320	0.470	x	0.365	0.550	x	0.450	0.015	0.015	0.040	0.070	B	0	DA PAD	IR - 6461A-MO
32	CLOC	0.440	x	0.310	0.480	x	0.360	0.550	x	0.450	0.020	0.020	0.040	0.080	B	0	PAD A, B	IR - 5379C
32	CLOC	0.680	x	0.290	0.730	x	0.340	0.829	x	0.400	0.020	0.020	0.040	0.080	B	0	No.16	IR - 5997A-MO
36	CLOC	0.290	x	0.290	0.340	x	0.340	0.420	x	0.420	0.024	0.020	0.016	0.060	B	0	0	IR - 8145A-MO
36	CLOC	0.290	x	0.290	0.340	x	0.340	0.420	x	0.420	0.024	0.020	0.016	0.060	B	-	-	IR - 6608A-MO
36	CLOC	0.497	x	0.330	0.830	x	0.375	0.920	x	0.455	0.020	0.020	0.040	0.080	B	0	No.10, 28	IR - 6387A-MO



COMMUNICATION MEDIA COMPONENTS GROUP

NGK SPARK PLUG CO.,LTD.
2808,IWASAKI,KOMAKI,AICHI,485.JAPAN

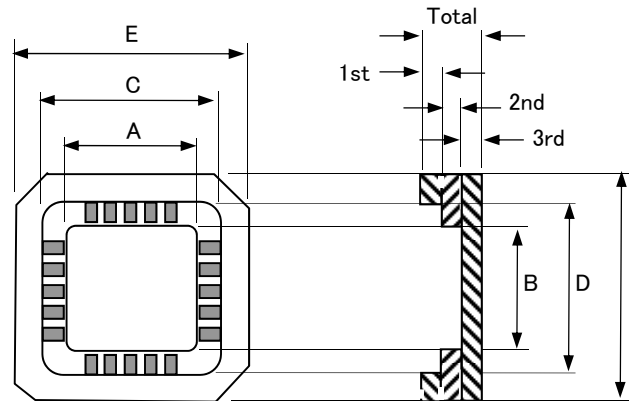
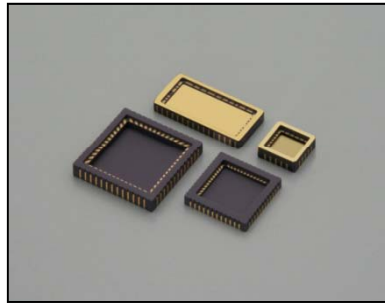
Inquiries about
the product

UNIT: inch

LEAD COUNT	PKG TYPE	CAVITY						OVERALL			LAYER THICKNESS				NTK MATERIAL CODE B:Black W:White	CONNECTION (0:NON-Connect)		DRAWING NO.
		DIE CAV.			TOP CAV.						1st	2nd	3rd	TOTAL		SEAL RING	DIE ATTACH	
		A	X	B	C	X	D	E	X	F								
40	CLOC	0.250	x	0.250	0.300	x	0.300	0.400	x	0.400	0.015	0.020	0.015	0.050	B	0	0	IR - 5338B
40	CLOC	0.250	x	0.250	0.320	x	0.320	0.400	x	0.400	0.020	0.020	0.010	0.050	B	0	0	IR - 5867AA
44	CLOC	0.250	x	0.250	0.390	x	0.390	0.650	x	0.650	0.020	0.020	0.020	0.060	B	0	0	IR - 288D
44	CLOC	0.340	x	0.340	0.430	x	0.430	0.650	x	0.650	0.020	0.030	0.025	0.075	B	0	0	IR - 5969A
44	CLOC	0.340	x	0.340	0.430	x	0.430	0.650	x	0.650	0.020	0.025	0.025	0.070	B	0	0	IR - 5194-MO
44	CLOC	0.474	x	0.474	0.562	x	0.562	0.650	x	0.650	0.035	0.040	0.025	0.100	B	0	-	IR - 5489C-MO
44	CLOC	0.475	x	0.430	0.550	x	0.500	0.650	x	0.650	0.020	0.020	0.030	0.070	B	0	No.22	IR - 5397C-MO
44	CLOC	0.495	x	0.400	0.550	x	0.500	0.650	x	0.650	0.020	0.020	0.025	0.065	B	0	No.34, A	IR - 5511-MO
48	CLOC	0.327	x	0.327	0.382	x	0.382	0.500	x	0.500	0.025	0.025	0.020	0.070	B	0	0	IR - 5498B
48	CLOC	0.350	x	0.350	0.430	x	0.430	0.560	x	0.560	0.033	0.015	0.015	0.063	B	No.6	0	IR - 5508A
48	CLOC	0.350	x	0.350	0.430	x	0.430	0.560	x	0.560	0.020	0.020	0.020	0.060	B	0	0	IR - 3013C
48	CLOC	0.400	x	0.400	0.460	x	0.460	0.560	x	0.560	0.032	0.020	0.020	0.072	B	-	-	IR - 3012A-MO
48	CLOC	0.410	x	0.410	0.457	x	0.457	0.560	x	0.560	0.020	0.020	0.016	0.056	B	0	0	IR - 3007B-C
52	CLOC	0.600	x	0.600	0.680	x	0.680	0.750	x	0.750	0.020	0.040	0.025	0.085	B	0	0	IR - 5524B
68	CLOC	0.300	x	0.300	0.420	x	0.420	0.560	x	0.560	0.020	0.025	0.020	0.065	B	0	0	IR - 6967A
68	CLOC	0.330	x	0.330	0.490	x	0.490	0.950	x	0.950	0.020	0.025	0.040	0.085	B	0	0	IR - 5783A-MO
68	CLOC	0.400	x	0.350	0.455	x	0.405	0.560	x	0.560	0.020	0.020	0.020	0.060	B	0	0	IR - 5671B
68	CLOC	0.400	x	0.400	0.560	x	0.560	0.950	x	0.950	0.025	0.025	0.030	0.080	B	0	0	IR - 311E
68	CLOC	0.435	x	0.435	0.535	x	0.535	0.955	x	0.955	0.020	0.025	0.025	0.070	B	-	-	IR - 5665A-MO
68	CLOC	0.550	x	0.550	0.650	x	0.650	0.953	x	0.953	0.052	0.025	0.050	0.127	B	-	-	IR - 6112A

NTK CLCC (Ceramic – Leadless Chip Carrier)

Inquiries about
the product



UNIT: mm

LEAD COUNT	PKG TYPE	CAVITY						OVERALL			LAYER THICKNESS				NTK MATERIAL CODE B:Black W:White	CONNECTION (0:NON-Connect)		DRAWING NO.
		DIE CAV.			TOP CAV.						1st	2nd	3rd	TOTAL		SEAL RING	DIE ATTACH	
		A	X	B	C	X	D	E	X	F								
3	CLCC		x			x		2.667	x	2.032	0.508			0.508	B	-	-	IR - 6010A-MO
3	CLCC	1.778	x	1.270				3.048	x	2.540	0.508	0.508		1.016	B	0	SEE DRAWING	IR - 5070AA
3	CLCC	3.302	x	2.794		x		5.080	x	4.572	0.508	0.254		0.762	B	-	No.2	IR - 6409A-MO
4	CLCC		x			x		2.794	x	2.413	0.508			0.508	B	-	-	IR - 5960A-MO
4	CLCC	3.561	x	2.291		x		5.588	x	3.810	1.016	0.381		1.397	B	0	No.1	IR - 5113A
4	CLCC	3.556	x	2.286		x		5.588	x	3.810	1.016	0.381		1.397	B	0	-	IR - 5933A
4	CLCC	4.699	x	3.048		x		6.223	x	4.572	0.432	0.254		0.686	B	-	No.1	IR - 6362AA-MO
6	CLCC	2.540	x	2.286	4.445	x	2.540	6.223	x	4.318	0.762	0.254	0.508	1.524	B	0	No.3	IR - 5052G-MO
12	CLCC	5.499	x	5.301	8.700	x	5.499	10.701	x	7.501	0.500	0.500	1.001	2.002	B	-	No.2	IR - 8423A-MO
16	CLCC	3.048	x	3.048	4.064	x	4.064	6.350	x	6.350	0.508	0.508	0.381	1.397	B	0	0	IR - 5063F
16	CLCC	3.302	x	3.302	4.572	x	4.572	6.350	x	6.350	0.635	1.016	1.016	2.667	B	No.8	0	IR - 6216A-MO
18	CLCC	5.334	x	3.683	7.112	x	5.461	8.890	x	7.239	1.016	0.508	0.508	2.032	B	9,10,11,12	No.1,2,15,16,17,18	IR - 5974A-MO



COMMUNICATION MEDIA COMPONENTS GROUP

NGK SPARK PLUG CO.,LTD.
2808,IWASAKI,KOMAKI,AICHI,485,JAPAN

Inquiries about
the product

UNIT: mm

LEAD COUNT	PKG TYPE	CAVITY						OVERALL			LAYER THICKNESS				NTK MATERIAL CODE B:Black W:White	CONNECTION (0:NON-Connect)		DRAWING NO.
		DIE CAV.			TOP CAV.						1st	2nd	3rd	TOTAL		SEAL RING	DIE ATTACH	
		A	X	B	C	X	D	E	X	F								
18	CLOC	5.334	x	3.683	7.112	x	5.461	8.890	x	7.239	1.016	0.508	0.508	2.032	B	0	0	IR - 5999A-MO
18	CLOC	6.071	x	4.420	7.137	x	5.486	8.890	x	7.239	0.381	0.508	0.381	1.270	B	0	No.18	IR - 5045B
18	CLOC	6.096	x	4.445	7.112	x	5.461	8.890	x	7.239	0.508	0.635	0.508	1.651	B	0	0	IR - 5051DA
18	CLOC	6.101	x	4.450	7.109	x	5.461	8.890	x	7.239	0.381	0.381	0.381	1.143	B	0	0	IR - 6500D-MO
20	CLOC	4.064	x	4.064	6.096	x	6.096	8.890	x	8.890	0.508	0.508	0.508	1.524	B	0	0	IR - 5517BA
20	CLOC	5.334	x	5.334	6.706	x	6.706	8.890	x	8.890	0.508	0.508	0.508	1.524	B	0	0	IR - 5705A
20	CLOC	5.334	x	5.334	6.706	x	6.706	8.890	x	8.890	0.508	0.508	0.508	1.524	B	0	No.4,5,9,10,14,15,19,20	IR - 8144A
20	CLOC	5.329	x	5.329	6.708	x	6.708	8.890	x	8.890	0.508	0.635	0.508	1.651	B	0	0	IR - 7558A-MO
20	CLOC	5.334	x	5.334	6.706	x	6.706	8.890	x	8.890	0.635	0.635	0.508	1.778	B	0	-	IR - 7935A-MO
20	CLOC	5.334	x	5.334	7.010	x	7.010	8.890	x	8.890	0.762	0.635	0.508	1.905	B	0	0	IR - 5856B-MO
20	CLOC	6.096	x	6.096	7.112	x	7.112	8.890	x	8.890	1.016	0.762	0.635	2.413	B	0	-	IR - 6107A-MO
20	CLOC	6.096	x	6.096	7.112	x	7.112	8.890	x	8.890	1.016	0.762	0.635	2.413	B	PAD A,B	PAD A,B	IR - 5259D
24	CLOC		x			x		8.499	x	8.499	0.729			0.729	B	-	-	IR - 4161A-MO
24	CLOC	4.699	x	4.699	6.223	x	6.223	8.509	x	8.509	0.381	0.762	0.381	1.524	B	0	0	IR - 5094A
24	CLOC	4.699	x	4.699	6.223	x	6.223	8.509	x	8.509	0.381	0.762	0.381	1.524	B	0	0	IR - 7944A-MO
28	CLOC	4.699	x	4.699	7.366	x	7.366	11.430	x	11.430	0.508	0.508	0.635	1.651	B	-	No.14	IR - 5778A-MO
28	CLOC	6.350	x	6.350	8.382	x	8.382	11.430	x	11.430	0.508	0.635	0.508	1.651	B	0	0	IR - 5583AA
28	CLOC	7.112	x	7.112	8.382	x	8.382	11.430	x	11.430	0.508	0.508	0.508	1.524	B	0	GND/No.14	IR - 338AA
28	CLOC	7.366	x	7.366	9.296	x	9.296	11.430	x	11.430	0.508	0.508	0.508	1.524	B	0	SEE DRAWING	IR - 5939C-MO
28	CLOC	7.620	x	7.620	9.042	x	9.042	11.430	x	11.430	0.254	0.762	0.508	1.524	B	0	0	IR - 220DA
28	CLOC	7.874	x	7.874	9.296	x	9.296	11.430	x	11.430	0.508	0.508	0.508	1.524	B	0	0	IR - 247AAW
28	CLOC	7.874	x	7.874	9.296	x	9.296	11.430	x	11.430	0.508	0.508	0.381	1.397	B	No.22	No.22	IR - 247H
28	CLOC	7.874	x	7.874	9.296	x	9.296	11.430	x	11.430	0.508	0.508	0.508	1.524	B	0	No.6,10,16,22,27	IR - 5451C
28	CLOC	7.874	x	7.874	9.296	x	9.296	11.430	x	11.430	0.508	0.635	0.508	1.651	B	0	0	IR - 5451D



COMMUNICATION MEDIA COMPONENTS GROUP

NGK SPARK PLUG CO.,LTD.
2808,IWASAKI,KOMAKI,AICHI,485,JAPAN

Inquiries about
the product

UNIT: mm

LEAD COUNT	PKG TYPE	CAVITY						OVERALL			LAYER THICKNESS				NTK MATERIAL CODE B:Black W:White	CONNECTION (0:NON-Connect)		DRAWING NO.
		DIE CAV.			TOP CAV.						1st	2nd	3rd	TOTAL		SEAL RING	DIE ATTACH	
		A	X	B	C	X	D	E	X	F								
28	CLOC	7.620	x	7.620	8.890	x	8.890	11.430	x	11.430	0.508	0.508	0.508	1.524	B	0	No.2,8,12,14,16,22,26,27	IR - 3014D
28	CLOC	7.620	x	7.620	8.890	x	8.890	11.430	x	11.430	0.508	0.508	0.508	1.524	B	0	No.2,8,12,14,16,22,26,28	IR - 3014E
28	CLOC	9.144	x	9.144		x		11.430	x	11.430	1.143	0.635		1.778	B	0	0	IR - 5929A-MO
32	CLOC	5.283	x	4.166	11.176	x	8.890	13.970	x	11.430	0.508	0.508	0.762	1.778	B	0	DA PAD	IR - 6385C-MO
32	CLOC	6.350	x	6.350	10.922	x	8.382	13.970	x	11.430	0.508	0.762	0.508	1.778	B	0	-	IR - 5654A-MO
32	CLOC	6.604	x	5.842	9.144	x	8.382	13.970	x	11.430	0.381	0.508	0.508	1.397	B	0	0	IR - 5402AA
32	CLOC	7.112	x	4.572	9.906	x	7.620	13.970	x	11.430	0.508	0.762	0.508	1.778	B	0	0	IR - 6077A
32	CLOC	7.112	x	6.350	9.144	x	8.382	13.970	x	11.430	0.508	0.635	0.508	1.651	B	0	0	IR - 5116D
32	CLOC	7.112	x	6.350	9.144	x	8.382	13.970	x	11.430	0.508	0.635	0.508	1.651	B	0	0	IR - 8539A
32	CLOC	7.112	x	6.350	9.906	x	8.382	13.970	x	11.430	0.508	0.635	0.508	1.651	B	0	0	IR - 7534A
32	CLOC	7.112	x	6.350	9.906	x	8.382	13.970	x	11.430	0.508	0.508	0.508	1.524	B	0	PAD A,B,C,D	IR - 5299B
32	CLOC	8.890	x	6.350	10.922	x	8.382	13.970	x	11.430	0.508	0.762	0.508	1.778	B	0	0	IR - 5646B
32	CLOC	8.890	x	7.620	11.430	x	8.890	13.919	x	11.379	0.508	0.508	0.635	1.651	B	-	No.16	IR - 5858A-MO
32	CLOC	9.144	x	7.112	11.176	x	9.144	13.970	x	11.430	0.508	0.635	0.635	1.778	B	0	0	IR - 285F
32	CLOC	9.906	x	7.366	11.430	x	8.890	13.970	x	11.430	0.635	0.508	0.508	1.651	B	0	0	IR - 5251E
32	CLOC	9.906	x	7.366	11.430	x	8.890	13.970	x	11.430	0.508	0.762	0.508	1.778	B	0	PAD A,B	IR - 5535A
32	CLOC	10.414	x	7.874	11.811	x	9.271	13.970	x	11.430	0.508	0.762	0.508	1.778	B	0	0	IR - 5411BA
32	CLOC	10.668	x	7.620	11.938	x	9.144	13.919	x	11.379	0.381	0.635	0.762	1.778	B	0	No.16	IR - 5753B-MO
32	CLOC	10.922	x	8.128	11.938	x	9.271	13.970	x	11.430	0.381	0.381	1.016	1.778	B	0	DA PAD	IR - 6461A-MO
32	CLOC	11.176	x	7.874	12.192	x	9.144	13.970	x	11.430	0.508	0.508	1.016	2.032	B	0	PAD A, B	IR - 5379C
32	CLOC	17.272	x	7.366	18.542	x	8.636	21.057	x	10.160	0.508	0.508	1.016	2.032	B	0	No.16	IR - 5997A-MO
36	CLOC	7.366	x	7.366	8.636	x	8.636	10.668	x	10.668	0.620	0.508	0.406	1.534	B	0	0	IR - 8145A-MO
36	CLOC	7.371	x	7.371	8.641	x	8.641	10.668	x	10.668	0.620	0.508	0.406	1.534	B	-	-	IR - 6608A-MO
36	CLOC	12.624	x	8.382	21.082	x	9.525	23.368	x	11.557	0.508	0.508	1.016	2.032	B	0	No.10, 28	IR - 6387A-MO



COMMUNICATION MEDIA COMPONENTS GROUP

NGK SPARK PLUG CO.,LTD.
2808,IWASAKI,KOMAKI,AICHI,485,JAPAN

Inquiries about
the product

UNIT: mm

LEAD COUNT	PKG TYPE	CAVITY						OVERALL			LAYER THICKNESS				NTK MATERIAL CODE B:Black W:White	CONNECTION (0:NON-Connect)		DRAWING NO.
		DIE CAV.			TOP CAV.						1st	2nd	3rd	TOTAL		SEAL RING	DIE ATTACH	
		A	X	B	C	X	D	E	X	F								
40	CLOC	6.350	x	6.350	7.620	x	7.620	10.160	x	10.160	0.381	0.508	0.381	1.270	B	0	0	IR - 5338B
40	CLOC	6.350	x	6.350	8.128	x	8.128	10.160	x	10.160	0.508	0.508	0.254	1.270	B	0	0	IR - 5867AA
44	CLOC	6.350	x	6.350	9.906	x	9.906	16.510	x	16.510	0.508	0.508	0.508	1.524	B	0	0	IR - 288D
44	CLOC	8.636	x	8.636	10.922	x	10.922	16.510	x	16.510	0.508	0.762	0.635	1.905	B	0	0	IR - 5969A
44	CLOC	8.636	x	8.636	10.922	x	10.922	16.510	x	16.510	0.508	0.635	0.635	1.778	B	0	0	IR - 5194-MO
44	CLOC	12.040	x	12.040	14.275	x	14.275	16.510	x	16.510	0.889	1.016	0.635	2.540	B	0	-	IR - 5489C-MO
44	CLOC	12.065	x	10.922	13.970	x	12.700	16.510	x	16.510	0.508	0.508	0.762	1.778	B	0	No.22	IR - 5397C-MO
44	CLOC	12.570	x	10.160	13.970	x	12.700	16.510	x	16.510	0.508	0.508	0.635	1.651	B	0	No.34, A	IR - 5511-MO
48	CLOC	8.306	x	8.306	9.703	x	9.703	12.700	x	12.700	0.635	0.635	0.508	1.778	B	0	0	IR - 5498B
48	CLOC	8.890	x	8.890	10.922	x	10.922	14.224	x	14.224	0.838	0.381	0.381	1.600	B	No.6	0	IR - 5508A
48	CLOC	8.890	x	8.890	10.922	x	10.922	14.224	x	14.224	0.508	0.508	0.508	1.524	B	0	0	IR - 3013C
48	CLOC	10.160	x	10.160	11.684	x	11.684	14.224	x	14.224	0.810	0.508	0.508	1.826	B	-	-	IR - 3012A-MO
48	CLOC	10.414	x	10.414	11.608	x	11.608	14.224	x	14.224	0.508	0.508	0.406	1.422	B	0	0	IR - 3007B-C
52	CLOC	15.240	x	15.240	17.272	x	17.272	19.050	x	19.050	0.508	1.016	0.635	2.159	B	0	0	IR - 5524B
68	CLOC	7.620	x	7.620	10.668	x	10.668	14.224	x	14.224	0.508	0.635	0.508	1.651	B	0	0	IR - 6967A
68	CLOC	8.382	x	8.382	12.446	x	12.446	24.130	x	24.130	0.508	0.635	1.016	2.159	B	0	0	IR - 5783A-MO
68	CLOC	10.160	x	8.890	11.557	x	10.287	14.224	x	14.224	0.508	0.508	0.508	1.524	B	0	0	IR - 5671B
68	CLOC	10.160	x	10.160	14.224	x	14.224	24.130	x	24.130	0.635	0.635	0.762	2.032	B	0	0	IR - 311E
68	CLOC	11.049	x	11.049	13.589	x	13.589	24.257	x	24.257	0.508	0.635	0.635	1.778	B	-	-	IR - 5665A-MO
68	CLOC	13.970	x	13.970	16.510	x	16.510	24.206	x	24.206	1.321	0.635	1.270	3.226	B	-	-	IR - 6112A